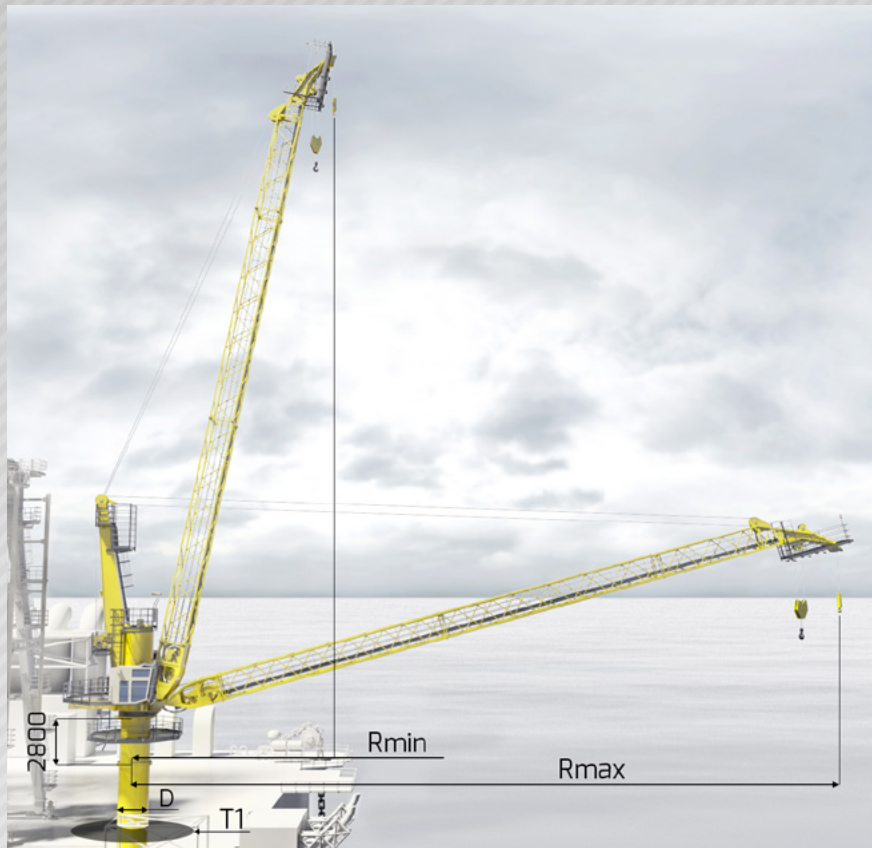


HMB
LINTECmarine

King Post Cranes

TYPICAL CRANE ARRANGEMENT



TYPICAL OPTIONS

THE FOLLOWING OPTIONS ARE AVAILABLE:

- Designed in accordance with EN 13852, DNV, API or ABS
- Electro-hydraulic drive
- Diesel-hydraulic drive
- Complete explosion protection according to ATEX guidelines
- Man-riding winch
- AOPS Automatic Overload Protection System
- MOPS Manual Overload Protection System
- Rope Tensioning Systems - Constant Tension
- AHC Active Heave Compensator
- Complete pedestal

TYPICAL RANGE DATA

| Type | D mm | Lifting Capacity mT | Hoisting Speed m/min | Luffing Time sec | Slewing Speed rpm | T1 mm | Size | R _{max} mm | R _{min} mm |
|------------------|---------|------------------------|-------------------------|---------------------|----------------------|----------|------|------------------------|------------------------|
| Proteus KP 1130 | 1 150 | 30 | 22.0 | 60 | 1.3 | 3 200 | 1 | 28 300 | 3 400 |
| | | | | | | | 2 | 32 300 | 3 500 |
| | | | | | | | 3 | 36 300 | 3 600 |
| Proteus KP 1540 | 1 500 | 40 | 22.5 | 70 | 1.1 | 4 000 | 1 | 36 300 | 4 700 |
| | | | | | | | 2 | 40 300 | 4 800 |
| | | | | | | | 3 | 44 300 | 4 900 |
| Proteus KP 1860 | 1 800 | 60 | 20.0 | 80 | 0.9 | 5 000 | 1 | 44 300 | 5 900 |
| | | | | | | | 2 | 48 300 | 6 000 |
| | | | | | | | 3 | 52 300 | 6 100 |
| Proteus KP 2280 | 2 200 | 80 | 18.8 | 90 | 0.7 | 6 000 | 1 | 48 500 | 5 100 |
| | | | | | | | 2 | 52 500 | 6 300 |
| | | | | | | | 3 | 60 000 | 7 000 |
| Proteus KP 24100 | 2 400 | 100 | 18.0 | 100 | 0.5 | 6 000 | 1 | 56 000 | 6 800 |
| | | | | | | | 2 | 60 000 | 7 100 |
| | | | | | | | 3 | 64 000 | 7 400 |

